

# Blast Nozzles

Blast nozzles play a vital role in a blast setup. For optimal production or for achieving a desired result, choice of the blast nozzle is extremely important.



## Standard Venturi Nozzles (Long Venturi)

Standard Venturi Nozzles have an inner liner made out of ultra-fine silicon carbide. They are light in mass and will last roughly 3 times longer than tungsten carbide. Ideal for general use in abrasive blasting or when using aluminium oxide as a blasting media. Ultra-fine silicon carbide is less prone to fracture than your normal silicon carbide.

Nozzle Size	Nozzle Consumption	+ Helmet Consumption
6.5mm	± 92 cfm	± 15 cfm
8mm	± 134 cfm	± 15 cfm
9.5mm	± 196 cfm	± 15 cfm
11mm	± 254 cfm	± 15 cfm
12.5mm	± 338 cfm	± 15 cfm



## XP Venturi Nozzles (Long Venturi)

### Performance Venturi

XP Venturi Nozzles have an inner liner made out of tungsten carbide. The design of the long venturi has been enhanced for optimal performance. This nozzle will outperform a standard long venturi nozzle by at least 40% if not more. Used in hydro blasting to compensate for loss in performance due to water tension or on tough coatings and heavy corrosion. The weight of the nozzle is 3 times the weight of a standard venturi nozzle. The cost saving in the performance of this nozzle could be covered in the first 3-5 days of blasting

Nozzle Size	Nozzle Consumption	+ Helmet Consumption
6.5mm	± 92 cfm	± 15 cfm
8mm	± 134 cfm	± 15 cfm
9.5mm	± 196 cfm	± 15 cfm
11mm	± 254 cfm	± 15 cfm
12.5mm	± 338 cfm	± 15 cfm



## 360 Blast Nozzle

Air consumption: 300 CFM @ 7 bar

360 Blast Nozzles blast in a cone pattern and are ideal for blasting hard to reach places and inside pipes. Can be used with fine to medium abrasives. Deflection tips are replaceable.



## Bent Nozzle

8 mm (134 CFM @ 7 bar)

9.5 mm (196 CFM @ 7 bar)

The Bent Blast Nozzle is a blast nozzle that is ideal for hard to reach areas. It has a robust inner liner made out of tungsten carbide.

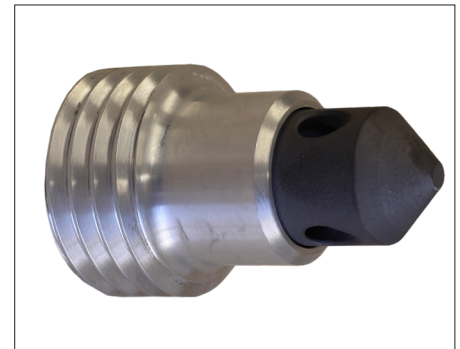


## Angle Nozzle

8mm single port (134 CFM air consumption)

8mm three port (402 CFM air consumption)

Angle blast nozzles are ideal for blasting recesses, behind angles and inside pipes. Angle nozzles are 45 degree blast nozzles and are available in both single and three port side outlets.



### Contact:

HQ Gauteng  
+27 (0)11 894 2005

Kwazulu Natal:  
+27 (0)31 700 8332

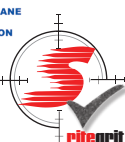
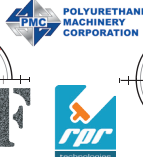
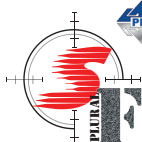
Western Cape:  
+27 (0)21 510 6385

Eastern Cape:  
+27 (0)41 581 0280

[sales@stormmachinery.co.za](mailto:sales@stormmachinery.co.za)

[www.stormmachinery.co.za](http://www.stormmachinery.co.za)

0861 1 STORM (78676)



DeFelsko®

