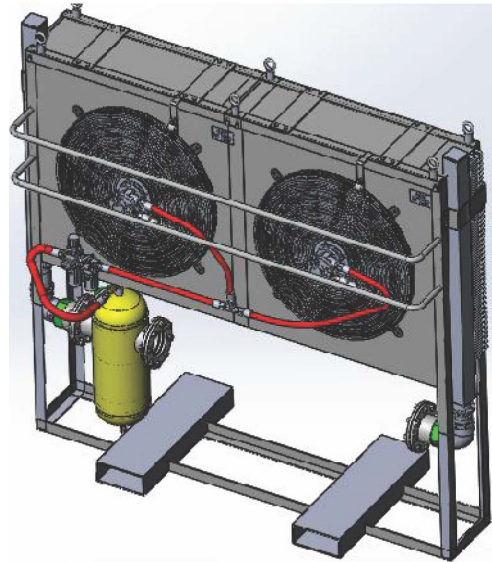
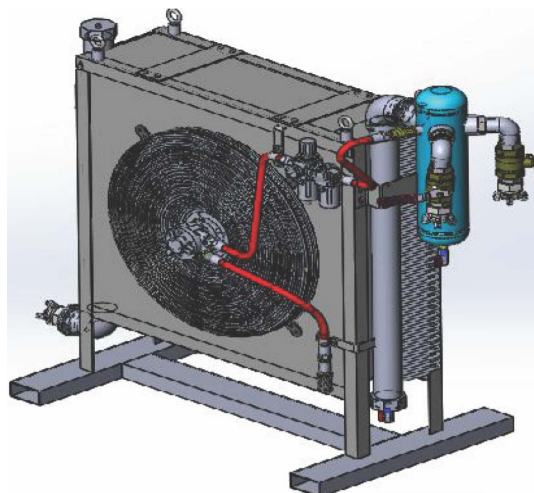


**400 & 800 cfm**



**1800 cfm**



**25cu.m/min ( 900 cfm)**

**OPERATING  
INSTRUCTIONS &  
SERVICE MANUAL**

**ENSURE THIS MANUAL IS MADE AVAILABLE TO ALL USERS OF THIS EQUIPMENT**  
Manual Part Number ERL-MAN-071



**⚠ WARNING**

Read and understand operator's manual before using this machine. Failure to follow operating instructions could result in injury or damage to equipment.

**DESIGN PRESSURE OF THE EQUIPMENT IS 12 BAR (175 psi). THIS PRESSURE SHOULD NEVER BE EXCEEDED**

# **AIR-COOLED AFTERCOOLER**

## **INSTALLATION AND MAINTENANCE INSTRUCTION MANUAL**

### **MOUNTING**

The after-coolers can be installed with the legs provided for floor mounting. Each leg has pre-Drilled mounting holes. They may also be wall mounted with brackets provided by customer

#### **IMPORTANT INSTRUCTION**

When unit is mounted make sure that support is provided for piping so that no additional stress is placed on the pipe manifolds.

### **INDOOR INSTALLATION**

An air-cooled after-cooler is most effective when installed in the lowest ambient temperature location. If located in a confined area the after cooler should be placed where an adequate surrounding air for cooling is available. The air is drawn from the fan side and blown through the tube core; the cooler should be operated using an outdoor air supply grille through an external wall during hot seasons. In the winter, heat recovery could be obtained simply by re-circulating the in-room air. Suggested location is, therefore, to face the fan side of the after cooler against a grilled window (to be closed during winter months) with a minimum clearance of 500 mm in order to permit the motor-fan extraction without moving the after cooler.

### **OUTDOOR INSTALLATION**

Any position is valid. It is necessary to provide a sunshade or screen if the after cooler will receive direct rays of the sun. The Air circuitry is shaped to drive, by gravity, the condensate out of the tubes: If the outdoor winter temperatures can fluctuate below 0 degree C, it is suggested that a start-stop thermostatic motor-fan control be installed. The control should be set so that when the compressed air outlet temperature approaches 3 degrees C, the after-cooler fan will shut down: fan should restart when outlet temperature reaches 6 degrees C.

### **INSTALLATION CHECK-LIST**

1. Inlet and outlet are connected correctly so that outlet air is directed towards separator.
2. Sufficient supply of coolest possible surrounding air is available at all times.
3. Compressed air-flow does not exceed the rated capacity for desired approach temperature.
4. Inlet compressed air temperature at point of installation is same as specified when unit was designed.
5. It is suggested to connect compressor outlet to after-cooler inlet with a flexible discharge hose and it should be mounted perpendicular to the direction of the vibration to insure maximum flexibility.
6. Drain trap on separator is connected to drain line.
7. By-pass piping is installed if desired, or for freezing temperature applications: This Permits continuous operation of the air system when the after-cooler must be isolated for maintenance or inspection. Since the by-pass will only be used on a temporary basis, One pipe size smaller than required for the after-cooler may be used.

### **MAINTENANCE**

To Clean Fins: Inspect fins periodically because dust and dirt accumulations may restrict airflow through the unit. When cleaning is necessary, use compressed air to blow off dust. Never use a brush as this may damage fins. If heavy accumulations are present, exterior of finned tube section may be steam cleaned.

To Clean Tube Interiors: If a compressor has been pumping excessive amounts of oil into the copper tubes and a build-up occurs within the tubes, they can be rod through or cleaned chemically.

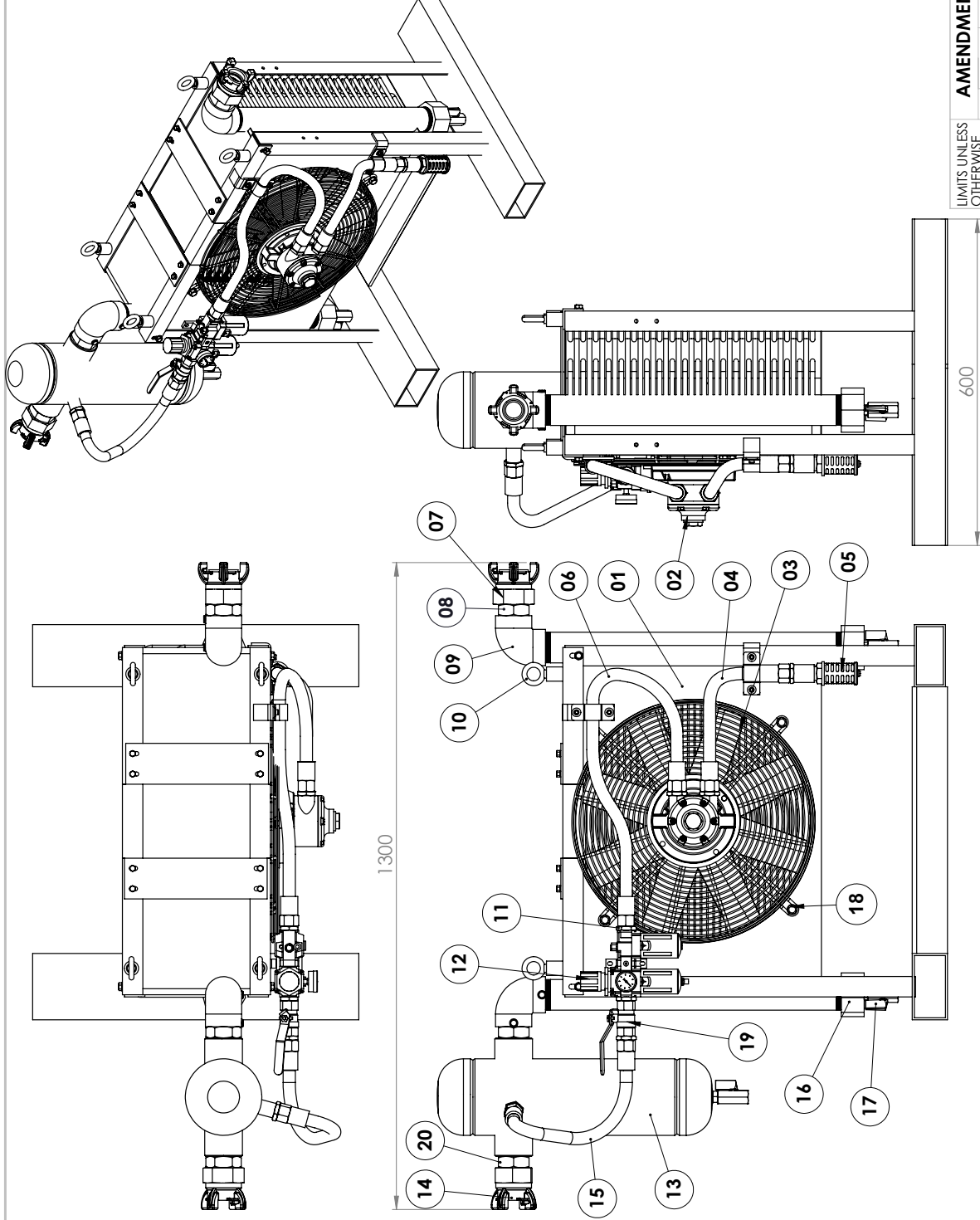
On site Cleaning Procedure: Disconnect inlet and outlet from the inline piping. Use a centrifugal pump to force a chlorinated solvent through the air passage, allowing the solution to circulate through the tubes until the oil and carbon are removed.

### **WARNING**

Do not use solvents with a strong acid or alkaline base.

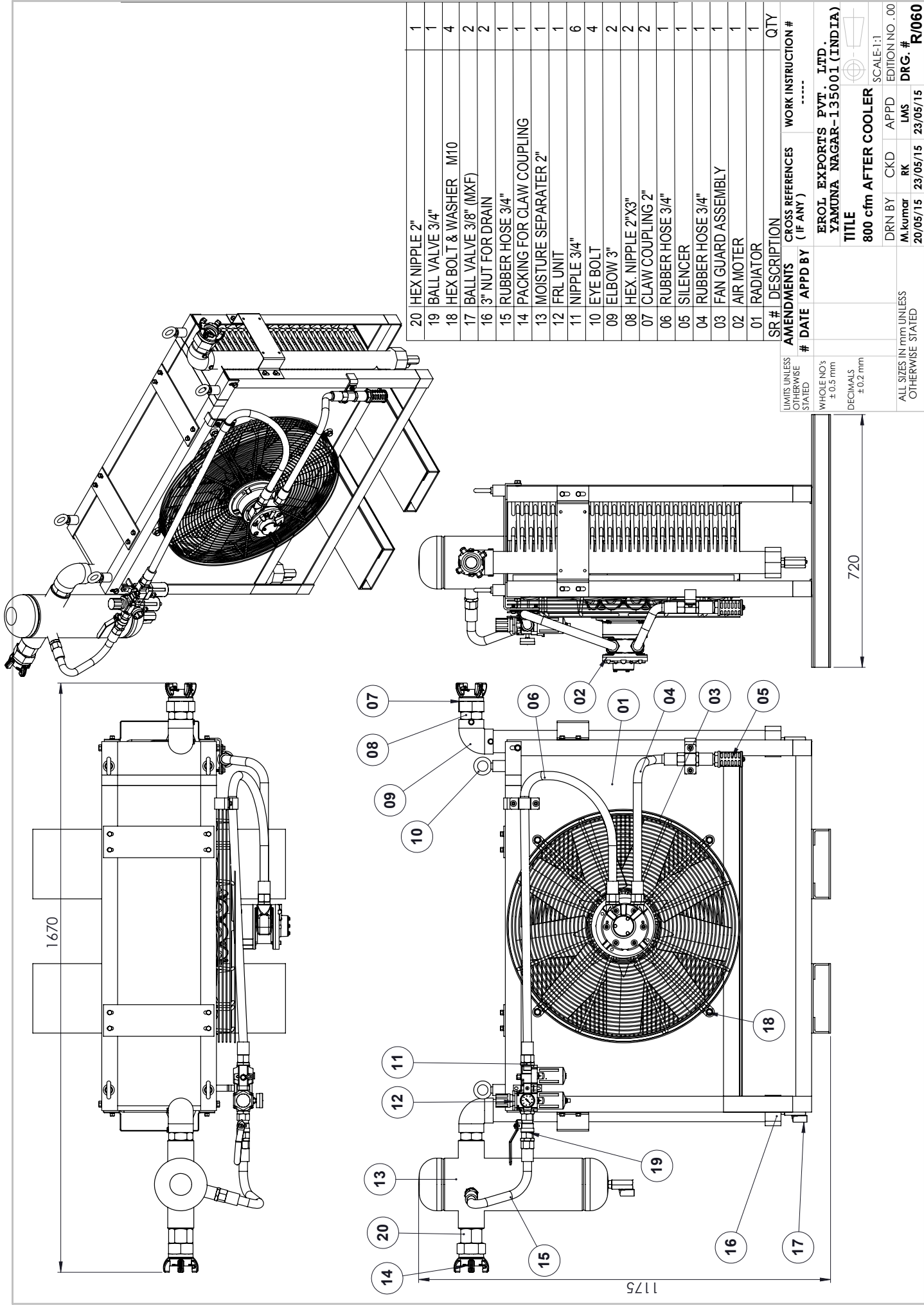
#### **AIR MOTOR LUBRICATION**

Read instructions on the air motor.



SR #	DESCRIPTION	QTY	DETAIL DRG #
20	HEX NIPPLE 2"	1	PE/400D
19	BALL VALVE 3/4"	1	PE/400E
18	HEX BOLT & WASHER M10	4	-----
17	BALL VALVE 3/8" (MXF)	2	PE/400AD
16	3" NUT FOR DRAIN	2	E/558W
15	RUBBER HOSE 3/4"	1	R/059B
14	PACKING FOR CLAW COUPLING	1	E/558FA
13	MOISTURE SEPARATOR 2"	1	R/059C
12	FRL UNIT	1	E/558L
11	NIPPLE 3/4"	6	E/558G
10	EYE BOLT	4	E/558AH
09	ELBOW 3"	2	E/558A
08	HEX NIPPLE 2"x3"	2	E/558S
07	CLAW COUPLING 2"	2	E/558AZ
06	RUBBER HOSE 3/4"	1	R/059B
05	SILENCER	1	E/558R
04	RUBBER HOSE 3/4"	1	R/059B
03	FAN GUARD ASSEMBLY	1	PE/070C
02	AIR MOTER	1	PE/204
01	RADIATOR	1	R/059A

AMENDMENTS		CROSS REFERENCES		WORK INSTRUCTION #	
#	DATE	APPD BY	(IF ANY)	-----	-----
LIMITS UNLESS OTHERWISE STATED		EROL EXPORTS PVT. LTD. YAMUNA NAGAR-135001 (INDIA)			
WHOLE NO's ± 0.5 mm		TITLE			
DECIMALS ± 0.2 mm		400 cfm AFTER COOLER			
ALL SIZES IN mm UNLESS OTHERWISE STATED		DRN BY	CKD	APPD	EDITION NO. 00
		M.kumar	RK	LMS	DRG. #
		20/05/2015 23/05/2015 23/05/2015			
		R/059			



# Storm Machinery Standard Warranty

Storm Machinery warrants all equipment referenced in this document which is manufactured by Storm Machinery and bearing its name to be free from defects in material and workmanship on the date of sale to the original purchaser for use. With the exception of any special, extended, or limited warranty published by Storm Machinery, Storm Machinery will, for a period of twelve months from the date of sale, repair or replace any part of the equipment determined by Storm Machinery to be defective. This warranty applies only when the equipment is installed, operated and maintained in accordance with Storm Machinery's written recommendations.

This warranty does not cover, and Storm Machinery shall not be liable for general wear and tear, or any malfunction, damage or wear caused by faulty installation, misapplication, abrasion, corrosion, inadequate or improper maintenance, negligence, accident, tampering, or substitution of non-Storm Machinery component parts. Nor shall Storm Machinery be liable for malfunction, damage or wear caused by the incompatibility of Storm Machinery equipment with structures, accessories, equipment or materials not supplied by Storm Machinery, or the improper design, manufacture, installation, operation or maintenance of structures, accessories, equipment or materials not supplied by Storm Machinery.

This warranty is conditioned upon the prepaid return of the equipment claimed to be defective to an authorized Storm Machinery distributor for verification of the claimed defect. If the claimed defect is verified, Storm Machinery will repair or replace free of charge any defective parts. The equipment will be returned to the original purchaser transportation prepaid. If inspection of the equipment does not disclose any defect in material or workmanship, repairs will be made at a reasonable charge, which charges may include the costs of parts, labour, and transportation.

THIS WARRANTY IS EXCLUSIVE, AND IS IN LIEU OF ANY OTHER WARRANTIES, EXPRESS OR IMPLIED, INCLUDING BUT NOT LIMITED TO WARRANTY OF MERCHANTABILITY OR WARRANTY OF FITNESS FOR A PARTICULAR PURPOSE.

Storm Machinery's sole obligation and buyer's sole remedy for any breach of warranty shall be as set forth above. The buyer agrees that no other remedy (including, but not limited to, incidental or consequential damages for lost profits, lost sales, injury to person or property, or any other incidental or consequential loss) shall be available. Any action for breach of warranty must be brought within one (1) year of the date of sale.

**Storm Machinery MAKES NO WARRANTY, AND DISCLAIMS ALL IMPLIED WARRANTIES OF MERCHANTABILITY AND FITNESS FOR A PARTICULAR PURPOSE, IN CONNECTION WITH ACCESSORIES, EQUIPMENT, MATERIALS OR COMPONENTS SOLD BUT NOT MANUFACTURED BY Storm Machinery.**

These items sold, but not manufactured by Storm Machinery (such as electric motors, switches, hose, etc.), are subject to the warranty, if any, of their manufacturer. Storm Machinery will provide purchaser with reasonable assistance in making any claim for breach of these warranties.

In no event will Storm Machinery be liable for indirect, incidental, special or consequential damages resulting from Storm Machinery supplying equipment hereunder, or the furnishing, performance, or use of any products or other goods sold hereto, whether due to a breach of contract, breach of warranty, the negligence of Storm Machinery, or otherwise.

**FOR NON-ENGLISH SPEAKING CUSTOMERS**

The Parties acknowledge that they have required that the present document, as well as all documents, notices and legal proceedings entered into, given or instituted pursuant hereto or relating directly or indirectly hereto, be drawn up in English.

FRENCH

Les parties reconnaissent avoir convenu que la rédaction du présente document sera en Anglais, ainsi que tous documents, avis et procédures judiciaires exécutés, donnés ou intentés, à la suite de ou en rapport, directement ou indirectement, avec les procédures concernées.

## SPANISH

Las partes reconocen haber convenido en que la redacción de este documento será en Inglés, así como todos los documentos, notificaciones y procedimientos judiciales emprendidos, dados o incoados como consecuencia de o en relación directa o indirectamente con los procedimientos pertinentes.

## PORTUGUESE

As partes reconhecem que eles concordaram que a elaboração deste documento será em Inglês, bem como todos os documentos, notas e processos legais inseridos, atribuídos ou instituídos, como resultado de ou em conexão direta ou indiretamente com os procedimentos pertinentes.

## ARABIC

تاءار جال او تاراعشال او قىئاشول ايمىچ كىلدىكى ،ئەيزىل جىزال غەلبىل بىل نوكىت فوس قىيىشول اىزە غەيىس نىل عىل عاقتا ادىن ان افرتلا فرىتى عى  
 قىلل تاد تاءار جال اىم قىرشابىم رىغى غا قىرشابىم قىروصب قىل عىتى ادىف وا قىچىتىن عىضو وانى عىم ،تىربا يىتلا قىيىنول قىلا

**TO PLACE AN ORDER**, please contact your nearest Storm Machinery distributor.

[www.stormmachinery.com.au](http://www.stormmachinery.com.au)

[www.stormachinery.co.za](http://www.stormachinery.co.za)

*All written and visual data contained in this document reflects the latest product information available at the time of publication.  
Storm Machinery reserves the right to make changes at any time without notice.*