



PRESSURE POTS

OPERATING INSTRUCTIONS & SERVICE MANUAL



Important Safety Instructions

Read all warnings and instructions in this manual.

Do not proceed until you fully understand its contents

These WARNINGS are included for the health and safety of the operator and those in the immediate vicinity.

Save these instructions.

Storm Machinery

www.stormmachinery.co.za

sales@stormmachinery.co.za



WARNING

Do not proceed to use this unit until you have READ these instructions in this MANUAL and YOU FULLY UNDERSTAND its contents. * These WARNINGS are included for the health and safety of the operator and those in the immediate vicinity.

- 1.** This pressure tank is only allowed to provide material pressurized up to a maximum load of **60 PSI(4 bar)**.
- 2.** The safety valve situated on the lid of the tank to protect the tank from being over pressurized. This valve has been set to blow off at 60 PSI. No adjustments should be made to this valve at any time
- 3.** No external drilling, welding or any form of machining is allowed on any part of the tank. This will weaken the structural integrity of the shell and should be

Overview

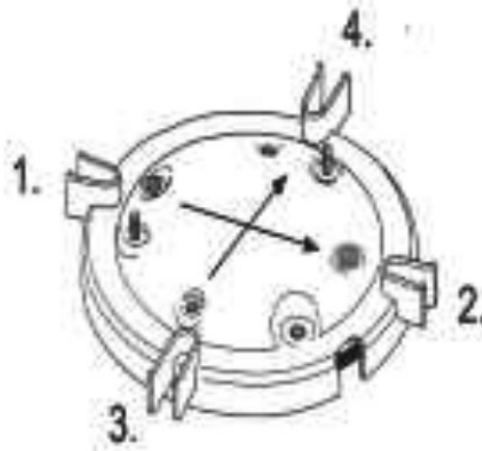
To ensure optimum performance of the tank, thorough cleaning is advised right after every shutdown. This will ensure the reduction of need for spare parts and also will prolong the life-span of the tank.

Operation

Check and make sure there is no pressurized air remaining in the tank before use. If there is, release it by turning the release valve clockwise until pressure bleeds down to zero.

1. Loosen all thumb nuts & swing bolts. Remove lid assembly away from main tank
2. Pour desired material to be sprayed into main tank.
3. Replace lid assembly and tighten it with main tank securely. (Hand tighten)

Tighten Sequence: 1. - 2. - 3. -4.



4. Connect air supply hose to the air inlet. (A water trap/filter is recommended to ensure moisture is not introduced to the material being sprayed)
5. Connect fluid & air delivery hose set to gun & paint pot.
6. Turn on air valve clockwise to gain a slow speed on the air motor agitator. (if this is set to high, it will cause the paint to bubble and lead to irregular spray)
7. Open the air inlet valve and slowly increase the pressure on the regulator until the desired working pressure is achieved. **(no more than 60 PSI !!)**
8. Open fluid & air outlet to gun
9. Operate spray gun according to the instructions attached to it

Caution: Regularly checking the safety valve is a priority. Do not attempt to repair or adjust the valve

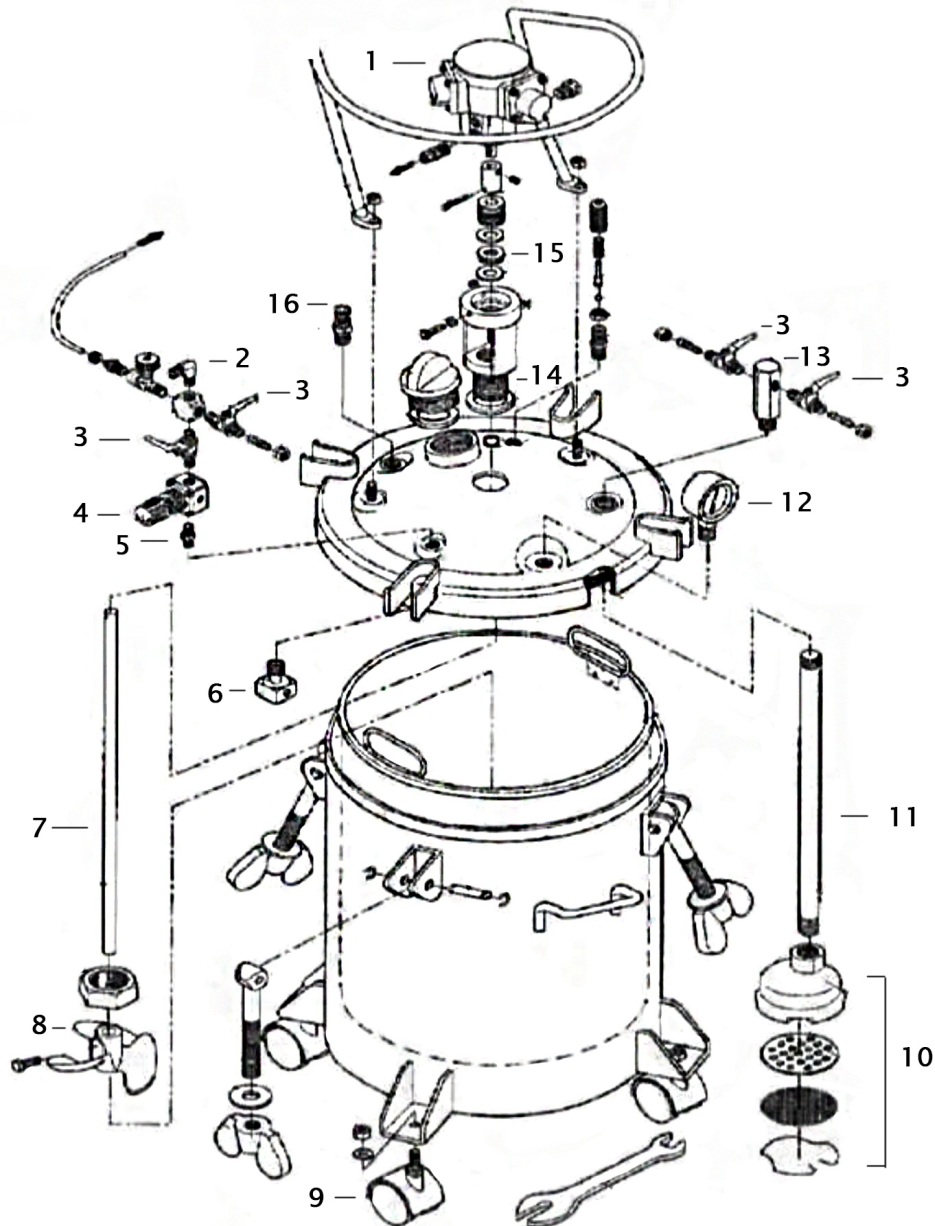
Cleaning & Maintenance

Thorough cleaning performed right after operation is always necessary.

Cleaning Procedure

1. Turn off air inlet.
2. Release all pressurized air remaining in the tank.
3. Loosen all thumb nuts and swing bolts, then move lid assembly to one side.
4. Pour out any remaining material (if any) from tank
5. Pour in clean solvent and wipe thoroughly the internals of the shell and lid. Make sure to leave a small amount of solvent in the tank.
6. Replace lid (following step 3 of operation) and tighten all thumb nuts.
7. Turn on air inlet and adjust the pressure to no more than 20-30 PSI.
8. Open fluid outlet to gun to ensure solvent runs through the fluid delivery hose.
9. Operate the spray gun until all solvent is drained from the tank. This will ensure the tank, hose & gun have been cleaned and are primed for the next use.

Parts List



Item Number	Item Code	Item Description
12	SAG50	GAUGE 50MM 1/4 REAR ENTRY
1	DP-5AN	AGITATOR MOTOR
3	BRBV-008	BRASS BALL VALVE 1/4"
13	AT-20A-P31	AIRPRO MATERIAL OUTLET ADAPTER FOR AT20-A
2	ELBMFG008	M – F ELBOW 1/4"
4	SAR2000	AIR REGULATOR & GAUGE 1/4"
5	P12	1/4" MALE – MALE NIPPLE
7	DP-5-AG-SHAFT	AGITATOR SHAFT
8	DP-5-A-15	AGITATOR BLADE PLASTIC
11	DP-3-PIPE	SUCTION PIPE
10	DP-5-50-53	SUCTION FILTER ASSEMBLY
15	AT-20A-21A	LEATHER SEAL
14	AT20-SR23	AGITATOR SEAL RING
6	AT-20A-P63	AIR INLET DISTRIBUTER
16	SAFETYV008	SAFETY BLOW-OFF VALVE 1/4"

Storm Machinery Standard Warranty

Storm Machinery warrants all equipment referenced in this document which is manufactured by Storm Machinery and bearing its name to be free from defects in material and workmanship on the date of sale to the original purchaser for use. With the exception of any special, extended, or limited warranty published by Storm Machinery, Storm Machinery will, for a period of twelve months from the date of sale, repair or replace any part of the equipment determined by Storm Machinery to be defective. This warranty applies only when the equipment is installed, operated and maintained in accordance with Storm Machinery's written recommendations.

This warranty does not cover, and Storm Machinery shall not be liable for general wear and tear, or any malfunction, damage or wear caused by faulty installation, misapplication, abrasion, corrosion, inadequate or improper maintenance, negligence, accident, tampering, or substitution of non-Storm Machinery component parts. Nor shall Storm Machinery be liable for malfunction, damage or wear caused by the incompatibility of Storm Machinery equipment with structures, accessories, equipment or materials not supplied by Storm Machinery, or the improper design, manufacture, installation, operation or maintenance of structures, accessories, equipment or materials not supplied by Storm Machinery.

This warranty is conditioned upon the prepaid return of the equipment claimed to be defective to an authorized Storm Machinery distributor for verification of the claimed defect. If the claimed defect is verified, Storm Machinery will repair or replace free of charge any defective parts. The equipment will be returned to the original purchaser transportation prepaid. If inspection of the equipment does not disclose any defect in material or workmanship, repairs will be made at a reasonable charge, which charges may include the costs of parts, labour, and transportation.

THIS WARRANTY IS EXCLUSIVE, AND IS IN LIEU OF ANY OTHER WARRANTIES, EXPRESS OR IMPLIED, INCLUDING BUT NOT LIMITED TO WARRANTY OF MERCHANTABILITY OR WARRANTY OF FITNESS FOR A PARTICULAR PURPOSE.

Storm Machinery's sole obligation and buyer's sole remedy for any breach of warranty shall be as set forth above. The buyer agrees that no other remedy (including, but not limited to, incidental or consequential damages for lost profits, lost sales, injury to person or property, or any other incidental or consequential loss) shall be available. Any action for breach of warranty must be brought within one (1) year of the date of sale.

Storm Machinery MAKES NO WARRANTY, AND DISCLAIMS ALL IMPLIED WARRANTIES OF MERCHANTABILITY AND FITNESS FOR A PARTICULAR PURPOSE, IN CONNECTION WITH ACCESSORIES, EQUIPMENT, MATERIALS OR COMPONENTS SOLD BUT NOT MANUFACTURED BY Storm Machinery.

These items sold, but not manufactured by Storm Machinery (such as electric motors, switches, hose, etc.), are subject to the warranty, if any, of their manufacturer. Storm Machinery will provide purchaser with reasonable assistance in making any claim for breach of these warranties.

In no event will Storm Machinery be liable for indirect, incidental, special or consequential damages resulting from Storm Machinery supplying equipment hereunder, or the furnishing, performance, or use of any products or other goods sold hereto, whether due to a breach of contract, breach of warranty, the negligence of Storm Machinery, or otherwise.

FOR NON-ENGLISH SPEAKING CUSTOMERS

The Parties acknowledge that they have required that the present document, as well as all documents, notices and legal proceedings entered into, given or instituted pursuant hereto or relating directly or indirectly hereto, be drawn up in English.

FRENCH

Les parties reconnaissent avoir convenu que la rédaction du présente document sera en Anglais, ainsi que tous documents, avis et procédures judiciaires exécutés, donnés ou intentés, à la suite de ou en rapport, directement ou indirectement, avec les procédures concernées.

SPANISH

Las partes reconocen haber convenido en que la redacción de este documento será en Inglés, así como todos los documentos, notificaciones y procedimientos judiciales emprendidos, dados o incoados como consecuencia de o en relación directa o indirectamente con los procedimientos pertinentes.

PORTUGUESE

As partes reconhecem que eles concordaram que a elaboração deste documento será em Inglês, bem como todos os documentos, notas e processos legais inseridos, atribuídos ou instituídos, como resultado de ou em conexão direta ou indiretamente com os procedimentos pertinentes.

ARABIC

تتأرجح إلى أو تاراعش إلى أو قىئاشول عيمج لكل ذلك، فيزلي ج نإلا غللاب نوكت فوس ققيشول هذه غايص نأىل عاقفتا امهنا فطر عي
قلصل تاذ تتأرجح إلى عم قرشابم ريغ وا قرشابم قروصب قل عتي اميف وا عجيثن ترضو وانيعم، تدربا يتلأ تيئون اقلأ

TO PLACE AN ORDER, please contact your nearest Storm Machinery distributor.

www.stormmachinery.com.au

www.stormmachinery.co.za

*All written and visual data contained in this document reflects the latest product information available at the time of publication.
Storm Machinery reserves the right to make changes at any time without notice.*