



## SM1000S \_ SM800S SUCTION CABINETS

### OPERATING INSTRUCTIONS & SERVICE MANUAL



#### **Important Safety Instructions**

Read all warnings and instructions in this manual.  
Do not proceed until you fully understand its contents  
These WARNINGS are included for the health and safety of  
the operator and those in the immediate vicinity.  
Save these instructions.

**Storm Machinery**  
[www.stormmachinery.co.za](http://www.stormmachinery.co.za)  
[sales@stormmachinery.co.za](mailto:sales@stormmachinery.co.za)

## **INTRODUCTION**

These cabinets are designed with professional purpose in mind, for maximum efficiency at a low operating cost.

This design is enhanced by the use of recyclable media, to blast any and all components that are able to be blasted and that are able to fit inside the cabinets.

The cabinet is designed with a large view glass which allows ambient light into the cabinet, and in addition to that, light is provided by way of a double fluorescent fitting, giving more than sufficient light, to the operator.

These units are usually supplied complete with a 4 cartridge single extractor.

The light and extractor switches are easily reachable on the panel above the cabinet.

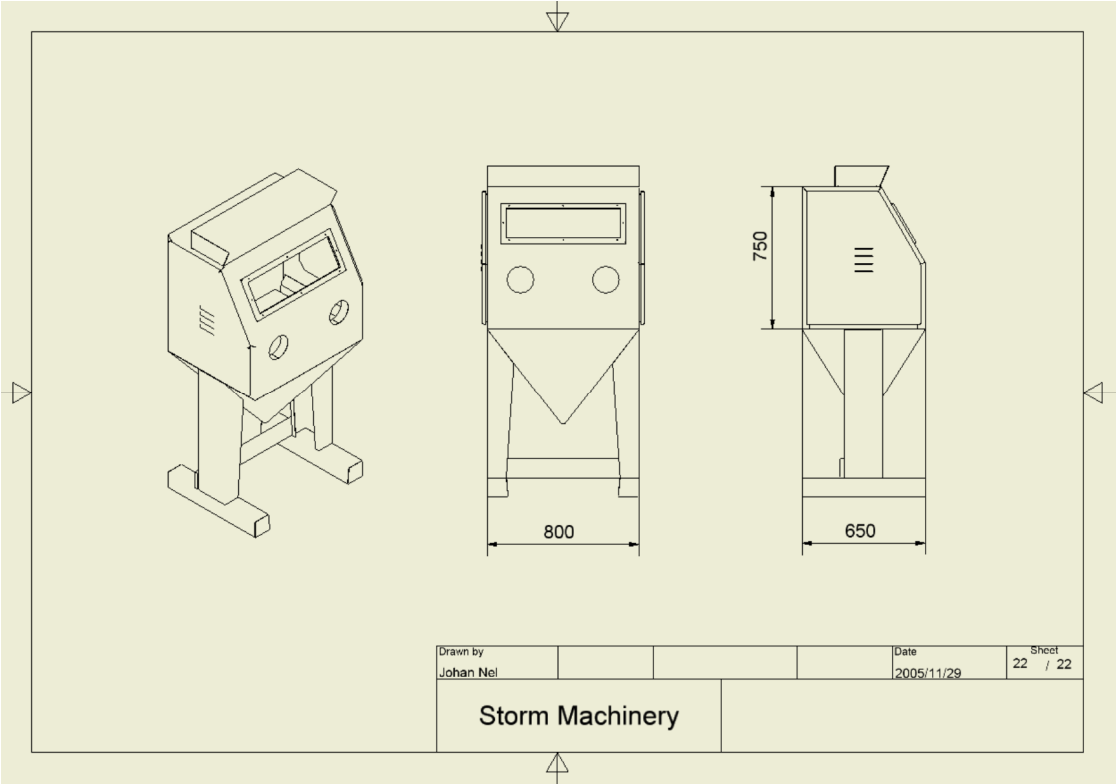
The blasting gun on the 800S unit is called standard gun with a "screw in" 6mm tungsten carbide nozzle

The blasting gun on the 1000S unit is called a major gun with a "push in" 8mm tungsten carbide nozzle.

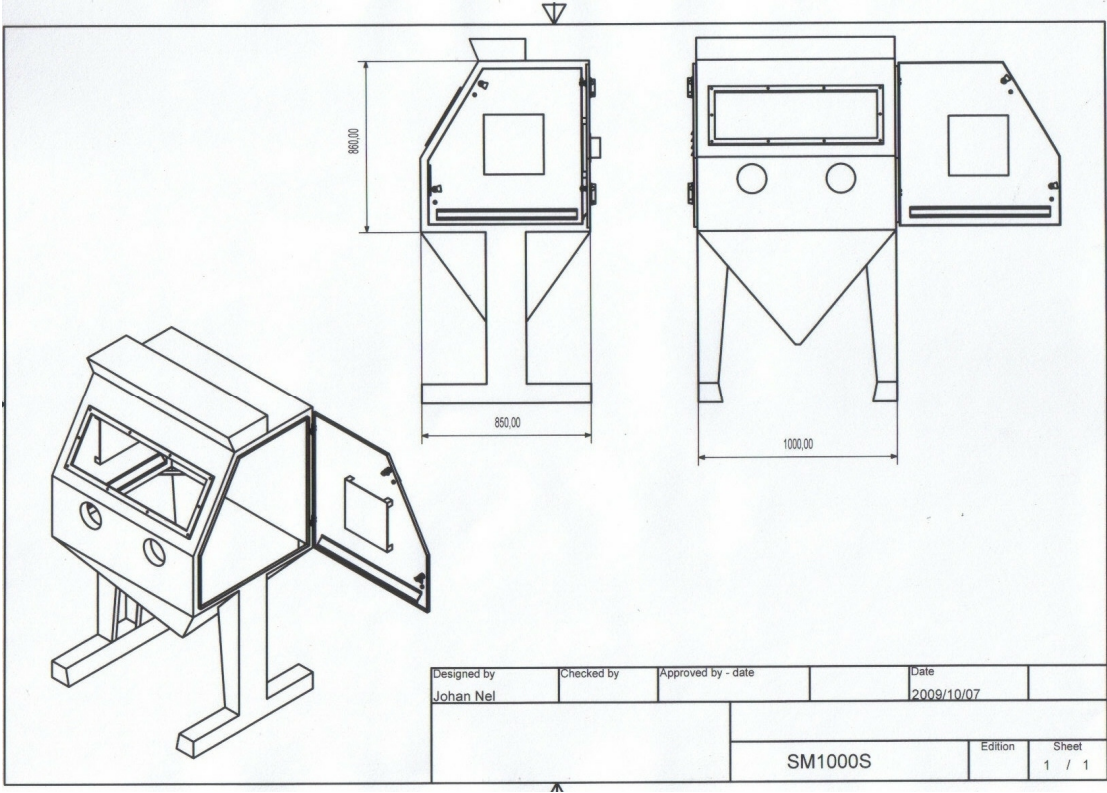
## **TYPICAL APPLICATION**

- Surface Cleaning
- Paint Removal
- Decorative blasting / Engraving glass etc.
- Rust Removal
- De-burring
- De-scaling
- Peening
- De-carbonising

SM 800 S DIMENSIONS:



SM 1000 S DIMENSIONS :



## **INSTALLATION:**

### **1) POSITIONING**

It is important to place the unit in the correct position. Try to be as close to your air supply as possible in the designated blasting area.

The extractor should ideally be placed on the same side of the cabinet as the three core cable that comes out of the light cover, for ease of connection.

### **2) ELECTRICAL CONNECTION**

The cabinet light and the extractor fan's electrical motor are powered by a single phase 220 Volt supply.

- a) Connect wires from light cover to 3 port connection box on extractor.( there is a wiring diagram in the cover of the electric motor. The three-core wire is located on the side of the light cover. )
- b) Connect plug top to your power socket. The switch that's in the centre of the light cover is for the light and the one towards the side is for the dust extractor.

### **3) AIR CONNECTION**

- a) Do not use snap on couplers, they restrict the flow of air.
- b) Air supply hose should be at least 15mm internal diameter. Keep it as short as possible.
- c) A combination air regulator, filter is fitted for inline filtration. Dry air results in best performance.
- d) Ideally, Air supply should be 18 CFM at 6 BAR / 90psi, for the SM800S unit and 29 CFM at 6 BAR / 90psi, for the SM1000S unit.
- e) Extractor is supplied with air for the vibrator. Air is supplied from a "T" piece on the side of the filter regulator.

### **4) DUST EXTRACTOR**

- a) 102mm Ducting Hose must be connected from side of cabinet to rear of the extractor.
- b) Fasten clamps (GS96 jubilee clamps) on ducting hose.

## **OPERATING INSTRUCTION:**

- a) Make sure of Air Supply
- b) Switch light on
- c) Choose the correct Abrasives for intended application. Pour grit in to cabinet through the sieve
- d) Close the door
- e) Switch on Dust Extractor
- f) Insert hand into rubber gloves and hold the blasting gun.
- g) Stand on foot pedal for blasting operation. To stop blasting process, remove foot from pedal.
- h) As much as possible, Blast at an angle of 90 degrees and at a distance of 50 – 100mm

## **DAILY MAINTENANCE**

- a) Drain Water out of Filter / Water Trap as often as possible
- b) Clean dust out of Dust Cartridge using vibrator. (preferably also during the course of the day i.e. lunch time)
- c) Remove dust tray with dust, empty the tray by either returning the grit to the cabinet or discarding it. Replace the dust tray.

## **MONTHLY MAINTENANCE**

- a) Check the extractor cartridges for damage (by running the vibrator for an extended period) and replace cartridges if necessary.
- b) Rotate the air jet through 90 degrees, to ensure even wearing of the jet.
- c) Check the rubber seals on the doors to ensure dust containment within the cabinet during operation.

## POSSIBLE FAULTS AND TROUBLESHOOTING:

### No Grit Coming Out Of Nozzle

No Abrasives left

Add Abrasives

Blocked Air Jet

Remove and unblock or replace air jet

Blockage in Grit Hose

Disconnect hose and remove blockage by blowing out the pipe

Blockage in Gun

Release foot pedal, remove nozzle clear blockage and replace nozzle

Blockage in the base of the hopper

Remove the fitting and check for blockages.  
If abrasives are muddy consider purchasing moisture trap.

Blasting Media too coarse or heavy to be blasted

Change media

# SLOW PRODUCTION

## Incorrect Blast Pressure

- Check air supply for blockages/ restrictions.
- Ensure minimum 15mm air supply hose is used from compressor.
- Check gun for blockages.
- Increase pressure if possible.

## Incorrect Abrasives

- Larger particle size generally used for removal of heavy coating.
- Finer particles are generally faster with light coating or rust removal.
- Abrasive is over recycled.

## Worn gun

- Check gun body & swage nipple for leaks.
- Check Air jet and replace if necessary.
- Check Nozzle and replace if necessary.

## Blocked breather hole in bottom assembly

- Clear blockage from breather hole, remove the assembly if necessary.

## Incorrect Application for Cabinet

- Contact Storm Machinery for suitable equipment for the application.

## **TOO MUCH DUST**

Extractor not sucking	- Cartridges are blocked. Clean out cartridges or replace.
Ducting Hose faulty or blocked	- Replace or clean out.
Leaking dust out the door	- Replace door seal, check extractor cartridges.
Dust coming out of vents on dust extractor	- Filter Cartridges not sealing – call for service. - Damage to cartridges – Replace cartridges if necessary.
Abrasives too soft for set up	- With glass beads, aluminium oxide, sand, garnet and other non-metallic abrasives it is advisable to increase your cleaning cycle on the extractor. Consider purchasing a Cyclone.

## **DOES NOT WANT TO BLAST**

Check Air Supply

Faulty foot valve	- Replace foot valve
-------------------	----------------------

Check and remove any blockages in Grit Hose, Gun , Bottom assembly



## **SPARES FOR SM 800S / SM 1000S:**

Majority of the spare on these cabinets are standard across the range as detailed below:

Air Supply Hose  
Dust Cartridges  
½ M/F Elbow  
½ Swage Nipple With Breathing Hole  
G8 Clamps  
Safety Glass ( Viewing )  
Safety Glass ( Light )  
Hinges  
Door Handles  
GS 96 Clamps for Ducting Hose  
Rubber Gloves  
Foam Rubber  
Electric Motor for Dust Extractor  
Extractor Fan

### **Gun Spares**

<b>SM 800 S</b>	<b>SM 1000 S</b>
Std. Gun 6mm HV Nozzle	Major Gun 8mm Push-in Nozzle
2.5 mm Std. Gun Air Jet	3.5mm Major Gun Air Jet
Std. Gun Body	Major Gun Body

# Storm Machinery Standard Warranty

Storm Machinery warrants all equipment referenced in this document which is manufactured by Storm Machinery and bearing its name to be free from defects in material and workmanship on the date of sale to the original purchaser for use. With the exception of any special, extended, or limited warranty published by Storm Machinery, Storm Machinery will, for a period of twelve months from the date of sale, repair or replace any part of the equipment determined by Storm Machinery to be defective. This warranty applies only when the equipment is installed, operated and maintained in accordance with Storm Machinery's written recommendations.

This warranty does not cover, and Storm Machinery shall not be liable for general wear and tear, or any malfunction, damage or wear caused by faulty installation, misapplication, abrasion, corrosion, inadequate or improper maintenance, negligence, accident, tampering, or substitution of non-Storm Machinery component parts. Nor shall Storm Machinery be liable for malfunction, damage or wear caused by the incompatibility of Storm Machinery equipment with structures, accessories, equipment or materials not supplied by Storm Machinery, or the improper design, manufacture, installation, operation or maintenance of structures, accessories, equipment or materials not supplied by Storm Machinery.

This warranty is conditioned upon the prepaid return of the equipment claimed to be defective to an authorized Storm Machinery distributor for verification of the claimed defect. If the claimed defect is verified, Storm Machinery will repair or replace free of charge any defective parts. The equipment will be returned to the original purchaser transportation prepaid. If inspection of the equipment does not disclose any defect in material or workmanship, repairs will be made at a reasonable charge, which charges may include the costs of parts, labour, and transportation.

**THIS WARRANTY IS EXCLUSIVE, AND IS IN LIEU OF ANY OTHER WARRANTIES, EXPRESS OR IMPLIED, INCLUDING BUT NOT LIMITED TO WARRANTY OF MERCHANTABILITY OR WARRANTY OF FITNESS FOR A PARTICULAR PURPOSE.**

Storm Machinery's sole obligation and buyer's sole remedy for any breach of warranty shall be as set forth above. The buyer agrees that no other remedy (including, but not limited to, incidental or consequential damages for lost profits, lost sales, injury to person or property, or any other incidental or consequential loss) shall be available. Any action for breach of warranty must be brought within one (1) year of the date of sale.

**Storm Machinery MAKES NO WARRANTY, AND DISCLAIMS ALL IMPLIED WARRANTIES OF MERCHANTABILITY AND FITNESS FOR A PARTICULAR PURPOSE, IN CONNECTION WITH ACCESSORIES, EQUIPMENT, MATERIALS OR COMPONENTS SOLD BUT NOT MANUFACTURED BY Storm Machinery.**

These items sold, but not manufactured by Storm Machinery (such as electric motors, switches, hose, etc.), are subject to the warranty, if any, of their manufacturer. Storm Machinery will provide purchaser with reasonable assistance in making any claim for breach of these warranties.

In no event will Storm Machinery be liable for indirect, incidental, special or consequential damages resulting from Storm Machinery supplying equipment hereunder, or the furnishing, performance, or use of any products or other goods sold hereto, whether due to a breach of contract, breach of warranty, the negligence of Storm Machinery, or otherwise.

## **FOR NON-ENGLISH SPEAKING CUSTOMERS**

The Parties acknowledge that they have required that the present document, as well as all documents, notices and legal proceedings entered into, given or instituted pursuant hereto or relating directly or indirectly hereto, be drawn up in English.

### **FRENCH**

Les parties reconnaissent avoir convenu que la rédaction du présente document sera en Anglais, ainsi que tous documents, avis et procédures judiciaires exécutés, donnés ou intentés, à la suite de ou en rapport, directement ou indirectement, avec les procédures concernées.

### **SPANISH**

Las partes reconocen haber convenido en que la redacción de este documento será en Inglés, así como todos los documentos, notificaciones y procedimientos judiciales emprendidos, dados o incoados como consecuencia de o en relación directa o indirectamente con los procedimientos pertinentes.

### **PORTUGUESE**

As partes reconhecem que eles concordaram que a elaboração deste documento será em Inglês, bem como todos os documentos, notas e processos legais inseridos, atribuídos ou instituídos, como resultado de ou em conexão direta ou indiretamente com os procedimentos pertinentes.

### **ARABIC**

تتأهأر إال او تاراعش إال او قئائشول اعيمج كفل ذلكو، ةيزيل جنإلا ةغللاب نوكت فوس ققيشول هذه ةغايص نأ علع اقفتا امهأ نافرطلا فرت عي قلصل تاذ تتأهأر إال عم قرشابم ريغ وأ قرشابم قروصب قلعتي اميف وأ ةجيتن تخضو وأ ني عم، تدربا يتلا ةينوناقلا

**TO PLACE AN ORDER**, please contact your nearest Storm Machinery distributor.

[www.stormmachinery.com.au](http://www.stormmachinery.com.au)

[www.stormmachinery.co.za](http://www.stormmachinery.co.za)

*All written and visual data contained in this document reflects the latest product information available at the time of publication.  
Storm Machinery reserves the right to make changes at any time without notice.*